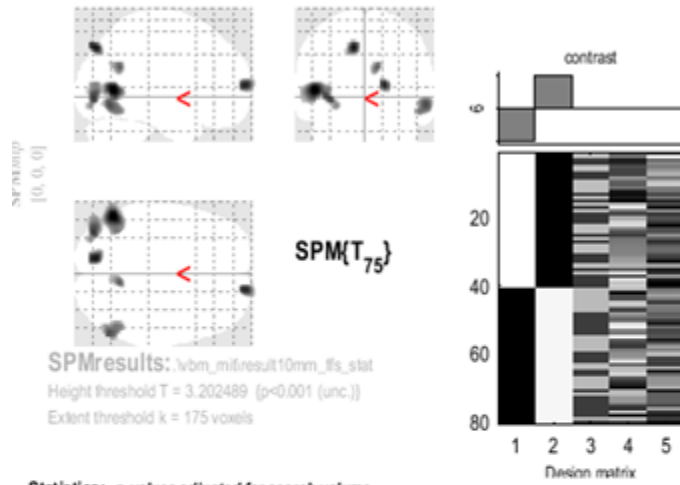


A>B



Statistics: p-values adjusted for search volume

set-level		cluster-level				peak-level				mm mm mm			
p	c	$P_{FWE-cor}$	$Q_{FDR-cor}$	k_E	P_{uncor}	$P_{FWE-cor}$	$Q_{FDR-cor}$	T	(Z_{crit})	P_{uncor}			
0.009	5	0.010	0.043	1941	0.002	0.259	0.665	4.22	3.98	0.000	-50	-63	5
						0.484	0.688	3.94	3.74	0.000	-36	-83	-3
						0.789	0.808	3.62	3.66	0.000	-45	-81	8
		0.515	0.906	304	0.173	0.360	0.665	4.08	3.87	0.000	-12	-81	44
		0.568	0.906	266	0.201	0.413	0.665	4.02	3.81	0.000	17	65	9
		0.231	0.568	602	0.063	0.577	0.766	3.84	3.66	0.000	57	-68	-9
		0.704	0.940	179	0.292	0.656	0.803	3.76	3.59	0.000	11	-57	27

table shows 3 local maxima more than 8.0mm apart

Height threshold: $T = 3.20$, $p = 0.001$ (0.985) Degrees of freedom = [1.0, 75.0]
 Extent threshold: $k = 175$ voxels, $p = 0.207$ (0.710) FWHM = 18.0 17.6 17.2 mm mm mm; 12.0 11.6 11.5 (voxels)
 Expected voxels per cluster, $\langle v \rangle = 174.238$ Volume: 1779705 = 527320 voxels = 301.3 resels